



# Uterine Cancer Basics

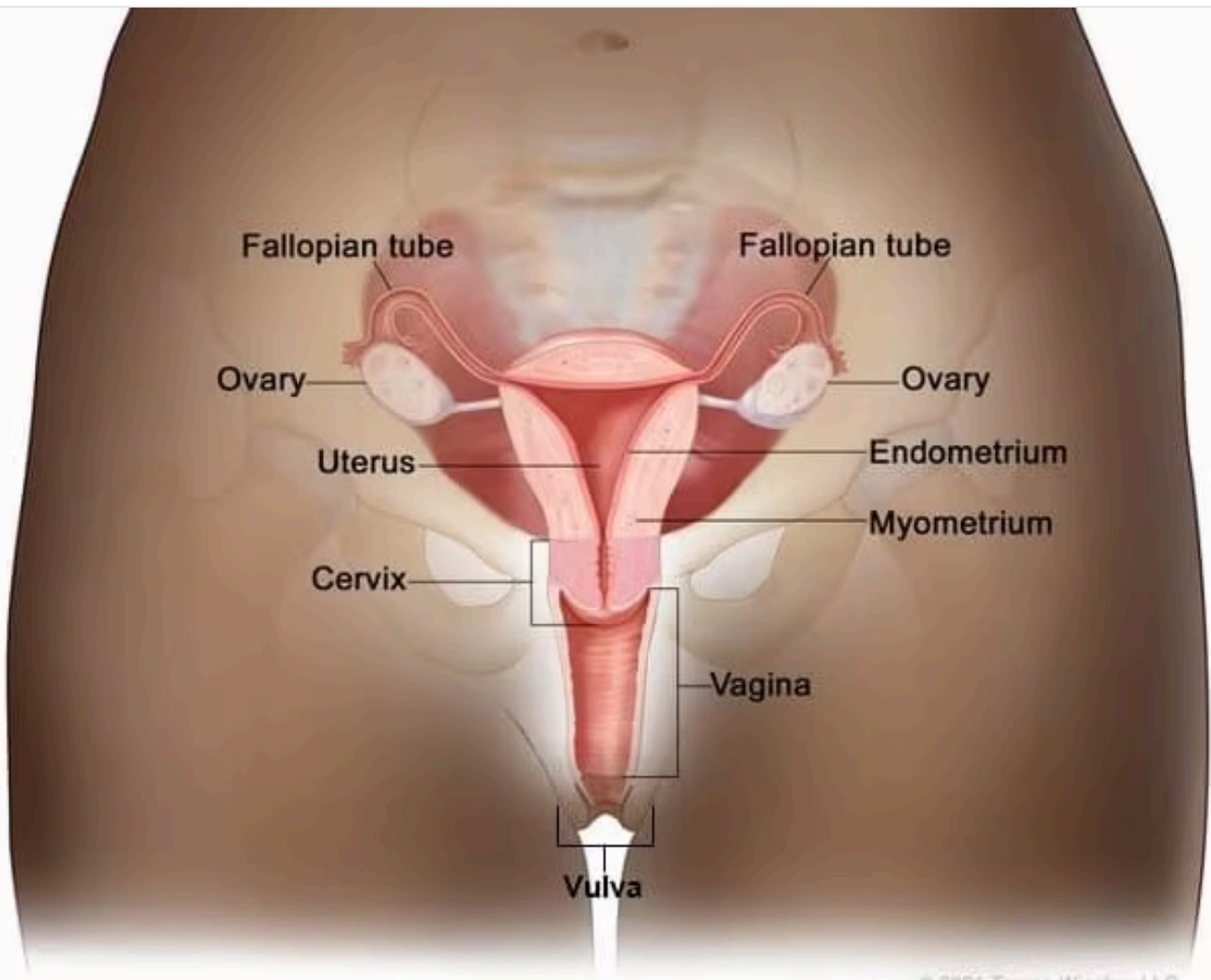
## KEY POINTS

- Uterine cancer is a disease in which cells in the uterus grow out of control.
- All women are at risk for uterine cancer as long as they have a uterus, and the risk increases with age.



## What it is

Uterine cancer is a disease in which cells in the uterus grow out of control. The uterus is the pear-shaped organ in a woman's pelvis (between the hip bones). The uterus, also called the womb, is where the baby grows when a woman is pregnant.



This diagram shows different parts of the female reproductive system.

SOURCE: © 2021 Terese Winslow LLC. US government has certain rights. Used with permission. Contact artist at [www.teresewinslow.com](http://www.teresewinslow.com) for licensing.

## Types

The most common type of uterine cancer is also called endometrial cancer because it forms in the lining of your uterus, called the endometrium.

All women are at risk for uterine cancer as long as they have a uterus, and the risk increases with age. Most uterine cancers are found in women who are going through or who have gone through menopause—the time of life when your menstrual periods stop.

SOURCES

CONTENT SOURCE:

[National Center for Chronic Disease Prevention and Health Promotion; Division of Cancer Prevention and Control](#)